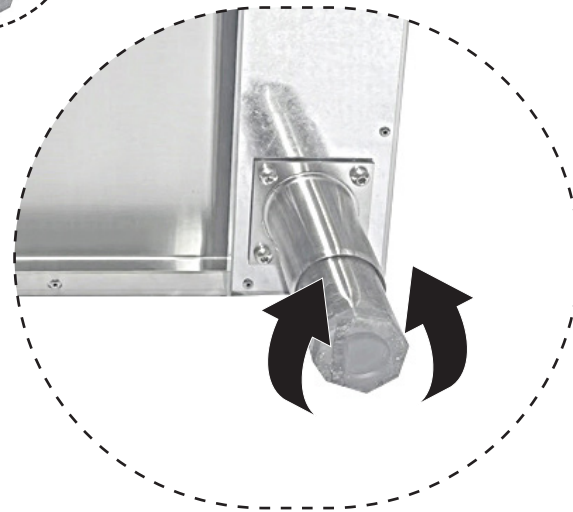
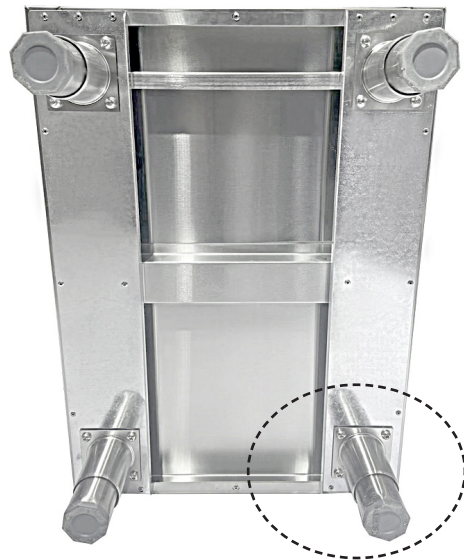


# VOGUE

## Assembly Instructions

### Model: DP276

## 4 Drawer Workstation St/St



### Safety Instructions

- Keep all packaging away from children. Dispose of the packaging in accordance with the regulations of local authorities.
- Whilst all care has been taken to remove sharp edges, care must be taken when cleaning or handling the cupboard to prevent risk of injury from exposed metal edges.
- **Safe working load: 35kgs per drawer**

### Product Description

Vogue St/St 4 Drawer Workstation with 100mm Upstand: 900(H) x 700(W) x 500(D)mm

### Adjusting height

1. Remove all protective film from the parts, taking care to avoid scratching the surfaces.
2. If desired to adjust height, rotate clockwise to decrease and counterclockwise to increase.
3. Turn the unit on its legs. The unit is now ready for use.

### Cleaning, Care & Maintenance

- Before using for the first time the cupboard should be cleaned thoroughly.
- Clean the cupboard regularly using a cleaning agent suitable for use with stainless steel.
- Always remove cleaning agent residue. This can discolour the surface of the cupboard.
- Never leave the surfaces damp as this can cause discolouration.



<b>UK</b>		Fourth Way, Avonmouth, Bristol, BS11 8TB United Kingdom
<b>Eire</b>	+44 (0)845 146 2887	Unit 9003, Blarney Business Park, Blarney, Co. Cork, Ireland
<b>NL</b>	040 - 2628080	
<b>FR</b>	01 60 34 28 80	

<b>BE-NL</b>	0800-29129	
<b>BE-FR</b>	0800-29229	
<b>DE</b>	0800 - 1860806	
<b>ES</b>	901-100 133	
<b>AU</b>	1300 225 960	15 Badgally Road, Campbelltown, NSW 2560, Australia

DP276\_ML\_A4\_v1\_2024/04/25